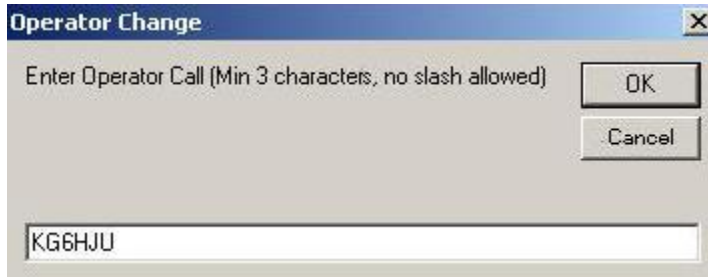


N1MM Logger - Quick Reference

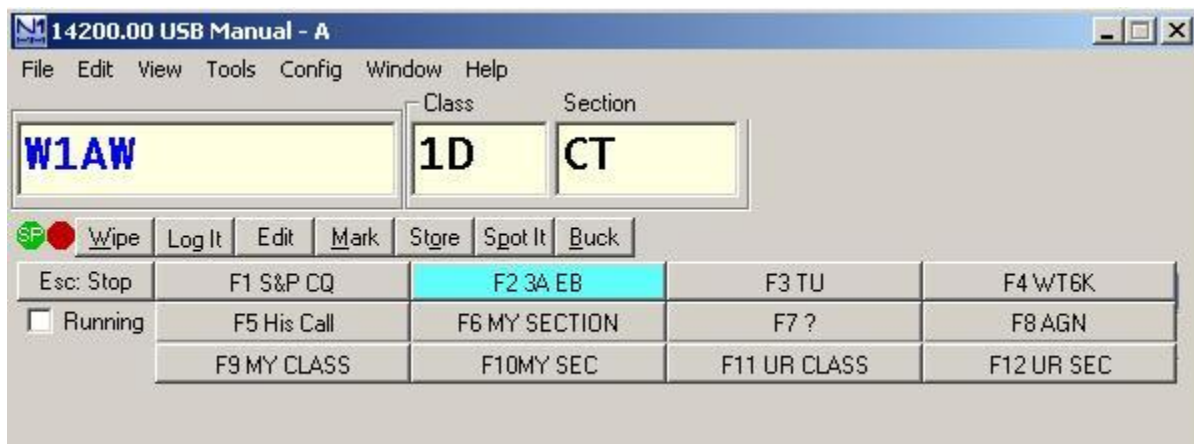
1. [OPERATOR CHANGE - NEW OPERATOR](#)

- Ctrl-O, type your **callsign**, and click **OK**.



2. [ENTER CALLSIGN - CLASS - SECTION](#)

- Type **Callsign** and press [Spacebar] to move to **Class** field.
- Type **Class** and press [Spacebar] to move to **Section** field.
- Type **Section** and press [Enter] to **log contact**.



Note: You can also use [Spacebar] to move the cursor between Callsign, Class, and Section fields when making corrections. Once in the field press [Backspace] to erase the error and retype.

3. [LOG THE CONTACT - CHECK LOG WINDOW](#)

- Check to see that your contact appears correctly in the log window.

